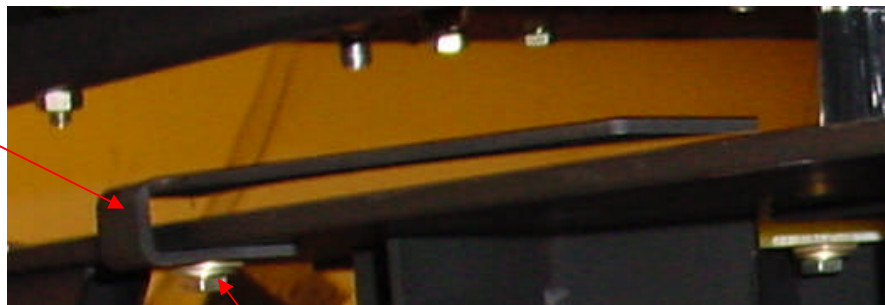




Installing “XXX”-Doubles Finger Directions

1. Release the throw arm and turn the PAT-TRAP[®] machine OFF.
2. Stand behind the Pat-Trap and locate the “X” or “XX” Doubles Finger on the back of the Throw Plate and replace with the “XXX” Doubles Finger. See Diagram 3.15.

“X”- Doubles
Finger
PT-9025X



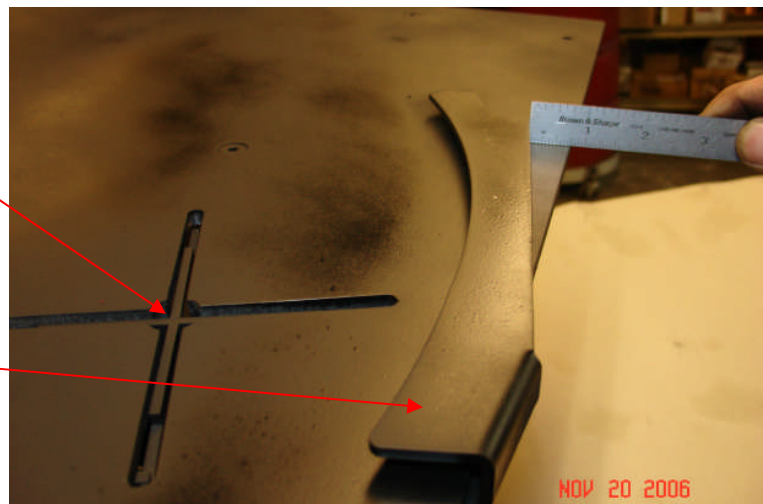
#1/4-28 x 1/2” Bolt

Diagram 3.15

Rear View of PAT-TRAP[®] with “X”-Doubles Finger

Elevator

“XXX”-Doubles
Finger
PT-9025XXX

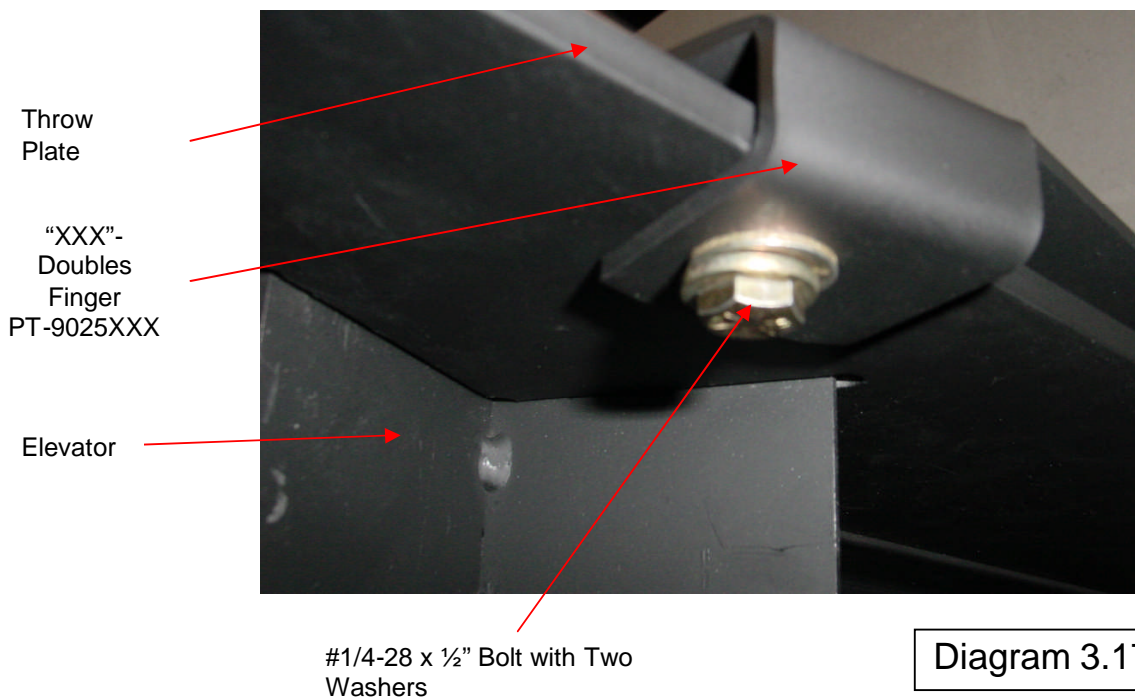


Top View PAT-TRAP[®] with “XXX”-Doubles Finger

Diagram 3.16



3. Position the “XXX” Finger so that the corner of the first step (rear of “XXX” Finger) measures approximately $\frac{3}{4}$ ” inside the rear edge of the Throw Plate. (See. Diagram 3.16.)
4. Use a $\frac{7}{16}$ ” wrench and tighten the $\frac{1}{4}$ -28 x $\frac{1}{2}$ ” bolt which secures the “XXX” Doubles Finger to the throw Plate (See Diagram 3.17). This is the approximate position of the “XXX” Doubles Finger for a level pair of “Doubles” targets.



Mounting Details of PAT-TRAP® “XXX”-Doubles Finger

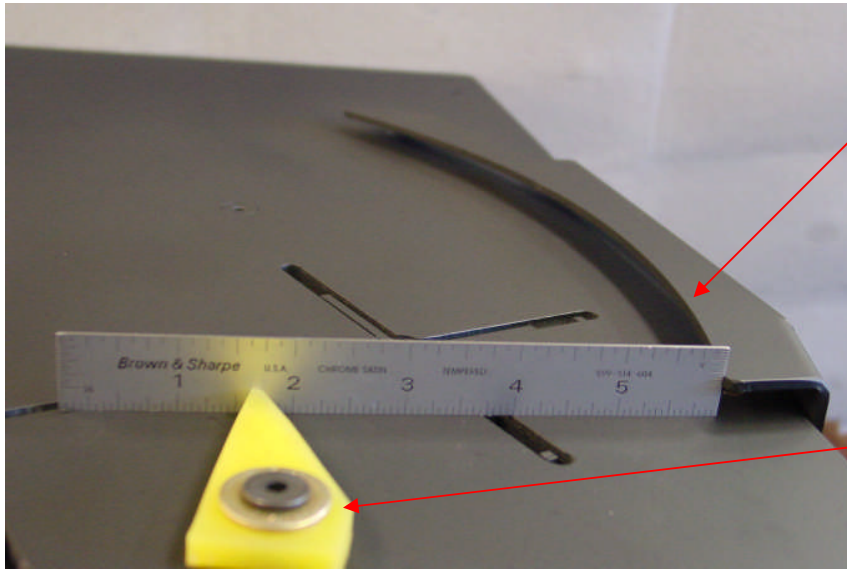
5. Check to make sure that the Singles Finger measures $4 \frac{3}{8}$ ” from the left-hand leading edge of the “XXX” Doubles Finger. (See Diagram 3.22) If not, loosen the $\frac{1}{4}$ -28 nut on the Singles Finger (beneath throw plate) and move the Singles Finger so that the right-hand tip of the Singles Finger measures $4 \frac{3}{8}$ ” from the left-hand end (leading edge) of the “XXX” Doubles Finger.



PAT-TRAP, Inc.

Choice of the ATA

110 Western Avenue • Henniker, New Hampshire 03242 • Tel. (603) 428-3396 • Fax (603) 428-7340



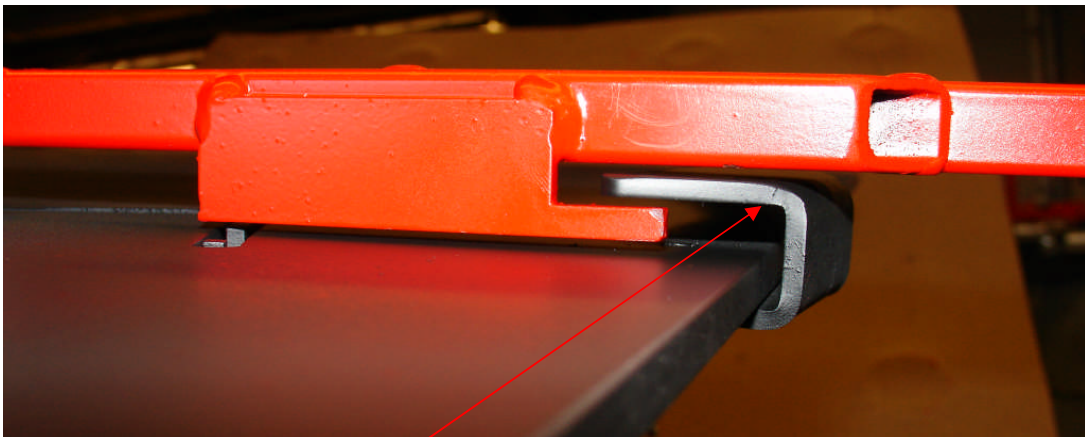
"XXX" Doubles
Finger
PT-9025XXX

Singles
Finger
PT-9023

Diagram 3.22

Measuring the 4 3/8" Distance between Singles Finger and "XXX" Doubles Finger

6. Retighten "Singles Finger". When tightening the 1/4-28 nut, hold back on the Singles Finger and the Socket Flat Head Cap Screw with a 5/32" Hex Key so that the Singles Finger does not rotate upwards. Use a ruler to maintain the 4 3/8" distance. See Diagram 3.22.



"XXX" Doubles Finger

Diagram 3.23

Proper Clearance of Throw Arm Rake and "XXX" Doubles Finger

Visit Our Web Site – WWW.PATTRAP.COM



7. Check to see that the front rake on the PAT-TRAP® throw arm clears the “XXX” Doubles Finger. See Diagram 3.23.
8. To verify the clearance, reduce the main spring tension (unwind the main spring crank handle C.C.W.).
9. Disconnect the Uni-Band (main spring) --- see appropriate section in the Pat-Trap®.
10. Move the throw arm manually past the brake and through the area of the “XXX” Doubles Finger” to check the clearance.
11. Channel Lock pliers can be used if the “XXX” Doubles Finger needs to be adjusted downwards. A long screwdriver can be used if the “Doubles Finger” needs to be pried upwards. See Diagram 3.24.

“XXX” Doubles
Finger
PT-9025XXX

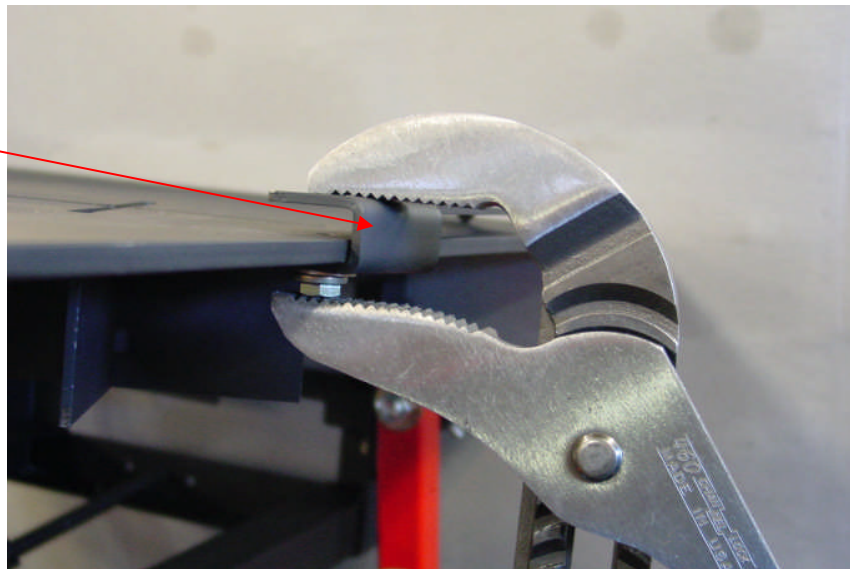


Diagram 3.24

Adjusting Height of “XXX” Doubles Finger

12. The end of the “XXX” Double Finger can be lowered by filing the tip of the support leg on the right side of the finger.
13. Presuming the machine is sitting on a level platform, with no wind; these directions should yield a level pair of Doubles.



14. For further adjustments move the “XXX” Doubles Finger in 1/16” increments.
15. To LOWER height of the RIGHT target, pull the “XXX” Doubles Finger towards the rear of PAT-TRAP®.
16. To RAISE the height of the RIGHT target, push the “XXX” Doubles Finger forwards towards the front of PAT-TRAP®.
17. Re-tighten the bolt. See Diagram 3.17.
18. Note: Use caution so as not to bend the “XXX” Doubles Finger either up or down. It must remain parallel to the Throw Plate.