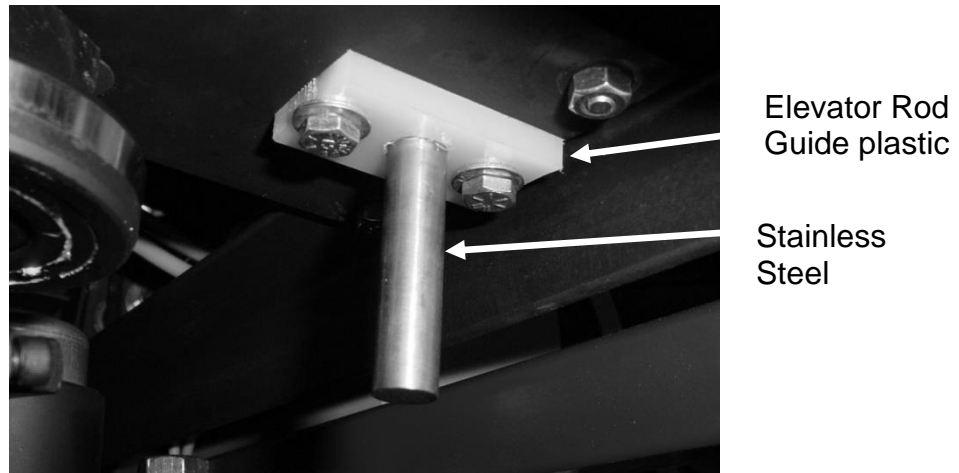




ELEVATOR GUIDES and ELEVATOR ROD GUIDE

The elevator needs to be inspected annually. If the guides become worn they can cause the elevator to have too much free play. The guides need to be replaced before the elevator extends above the surface of the throw plate. See picture #2.



Elevator Rod Guide



INSTALLING ELEVATOR GUIDES

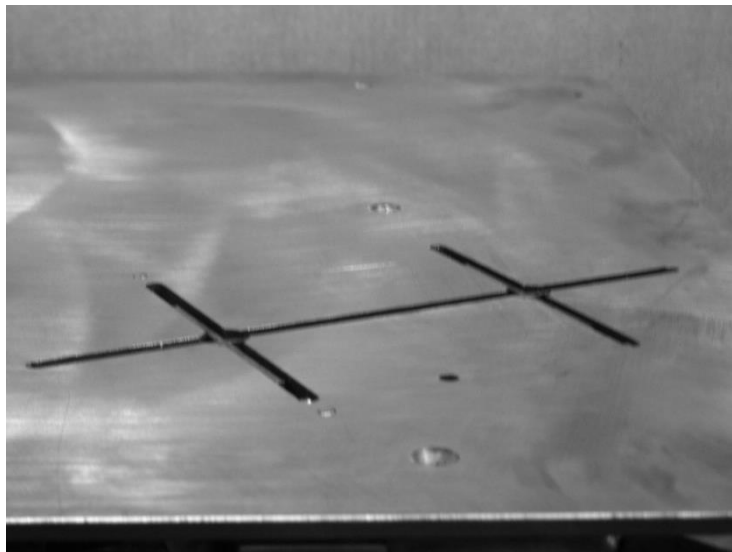
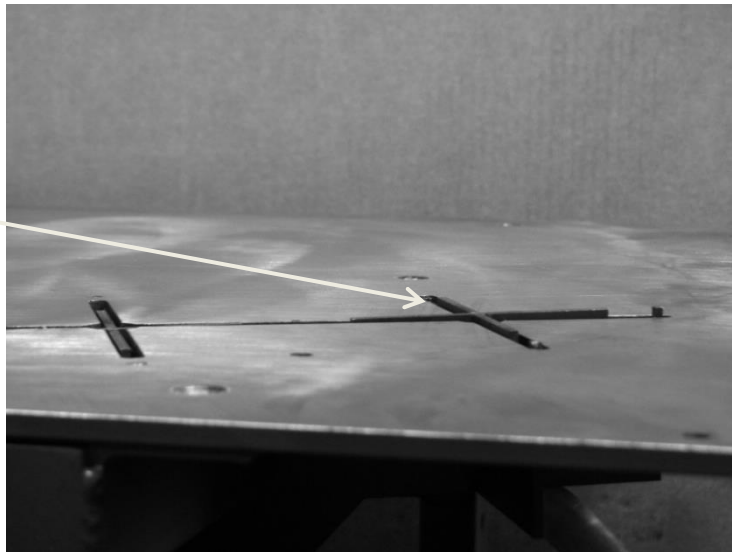
Before bolting to the throw plate check to see that the Guide slides easily on the wing of the elevator. If it is tight then either scrape, file or use sandpaper to remove corrosion or target dust buildup.

Mount the guides. Face beveled corner of the Left Guide towards the angle iron frame. Adjust the Right Guide first and position the Elevator as close to center as possible and make the bolt snug.

Then position the Left Guide and center the wing of the elevator.

The guides need to allow free travel of the elevator, about 1/32" of play.

Picture #3
Elevator has too much free play.
Replace Elevator Guides & Rod Guide



Picture #4
Elevator Guides are good and elevator is level and positioned 1/16" below throw plate.